



SRINAKHARINWIROT UNIVERSITY

Sustainable Development Goals Report **2023**



TABLE OF CONTENT

ABOUT SRINAKHARINWIROT UNIVERSITY	3
HIGHLIGHTS	4
INTRODUCTION	5
OUTSTANDING PROJECT	7
SDG1 No Poverty	8
SDG2 Zero Hunger	10
SDG3 Good Health and well-being	12
SDG4 Quality Education	14
SDG5 Gender Equality	16
SDG6 Clean Water and Sanitation	18
SDG7 Affordable and Clean Energy	20
SDG8 Decent Work and Economic Growth	22
SDG9 Industry Innovation and Infrastructure	24
SDG10 Reduced Inequalities	26
SDG11 Sustainable Cities and Communities	28
SDG12 Responsible Consumption and Production	30
SDG13 Climate Action	32
SDG14 Life Below Water	34
SDG15 Life on Land	36
SDG16 Peace, Justice and Strong Institutions	38
SDG17 Partnerships for the Goals	40





ABOUT SRINAKHARINWIROT UNIVERSITY

Philosophy

Education is Growth

The five growth respects are

1. Growth of faith: trust in life, roles and one's own duty.
2. Growth of sacred precepts: ethics and goodness.
3. Growth of attentiveness: thoughtfulness and continuous learning.
4. Growth of abandonment: generosity and kindness to others
5. Growth of wisdom: living, thinking, and doing with intellect.

Vision

Learning university for society

Missions

1. Produce and develop people of all ages with the desirable traits for national development through excellent learning process
2. Create high quality research and innovation for sustainable social development
3. Deliver valuable academic services based on social responsibility
4. Study, preserve, and enrich cultures and arts
5. Develop an administration system based on excellence and good governance

Core Values

S Social Responsibility

W Work Smart

U Unity

Organizational Culture

1. Cultivate politeness and humility.
2. Instill a collective mindset and prioritize public interests.
3. Achieve academic excellence and uphold moral integrity.

Core Competencies

1. Expertise in learning provision of the modern disciplines at international quality standards
2. Participatory academic services for a resilient and sustainable society





HIGHLIGHTS

Institute



16 Faculties
5 Colleges



3 Institutes
8 Bureaus/Centers



3 Hospitals



5 Demonstration Schools



Students

- Graduate Students
- Postgraduate Students



Faculty Staffs

- Staffs
- International Staffs

Programs



Total **197**

- 93** Undergraduate programs
- 104** Postgraduate programs
- 12** International programs



International Accreditation

- 2** programs, WFME (World Federation for Medical Education)
- 12** programs, AUN-QA (ASEAN University Network-Quality Assurance)



INTRODUCTION

Research

Srinakharinwirot University (SWU) sets the research direction based on the 13th National economic and social developmental plan (2023-2027), 20-year National research plan and University's vision: to be "Learning university for society". SWU research and innovation also follows the university's pledge for the achievement of UN-SDG. Therefore, SWU's research strategies are to produce high quality research and innovations which are beneficial in sustainable development of the country in terms of economy, society and environment. Four research themes; frontier and global research, high value-added economy, high opportunity society and eco-friendly living were announced; these themes covered 12 specific research clusters that were aligned with the 16 areas of UN-SDG, such as poverty reduction and adequate social protection (SDG1), circular economy and low carbon society (SDG 6,7,13), advance medicine (SDG 3,10) and innovative education (SDG1,2,4). The number of SWU's research publications that were aligned with the UN-SDG increased substantially from 193 publications in 2022 to 277 publications in 2023. These SDG research publications covered all 16 areas of UN-SDG, with the highest number in the SDG3, good health and well-being (108 publications), followed by SDG7, affordable and clean energy (28 publications) and SDG 4, Quality education (24 publications). Apart from publications, several research projects were implemented in the community and society for helping in sustainable development of the country. Examples of these research projects and their SDG impacts are listed.

"The Creation of Network and Mechanism to Help Enhance the Elderly Employability in Thai Society" by Associate Professor Cholvit Jearajit and team demonstrated the social, policy and economic impacts corresponded to SDGs 3,4,8,16. This research project promoted the employment skills of elderly, covering financial, health, and digital aspects, alongside occupational training, which helped them develop the necessary skills for self-reliance in a changing world. This project also initiated the formation of senior community enterprise networks within the province which encouraged collective action, facilitated knowledge exchange, and promotes joint activities. As a result, the quality of life and incomes of the elderly in Thai society were improved.

"The community organization council communicative community rights and water resource management in Suphan Buri province" by Associate Professor Poom Moolsilpa and team emphasized SDGs 2,6,12,16 by supporting the role of Community Organization Council to communicate community rights, prevent conflicts, establish strategic water flow management and promote sustainable water resources management in Suphan Buri Province. As a result, this project promoted sustainable agriculture through the participation in water resources management which secured farmers' incomes and reduce the risk of monoculture farming.

"Plant and herbal research studies" from Center for excellence in plant and herbal innovation research (CEPHIR) by Assistant Professor Pattarawit Rukthong and team supported SDGs 2,3,4,9,12,15. CEPHIR focused on antioxidant properties of Wolffia and encouraged farmers and small community enterprises to cultivate Wolffia in Smart Farm greenhouses. CEPHIR fosters interdisciplinary collaboration among science, food science, and engineering fields to develop mobile applications for food safety databases and Smart Farming under the BCG (Bio-Circular-Green) economic model. This helped create value-added agricultural products for community enterprises in Ban Chang subdistrict, U-Thai district, Phra Nakhon Si Ayutthaya province and expanded to the Department of Climate Change and Environment to establish learning centers which will benefit society and the environment in a larger scale.

Last example is the development of "An Application of Geographic Information System for Participatory Analysis of Wildfire Risk Area in Chiang Rai Province" by Assistant Professor Wuttichai Boonpook and team. Supporting SDG 11, this project created risk maps for forest fire occurrence which helped in planning and monitoring forest fires and planning community involvement in preventing burning in the area. This application has been adopted by the government for sustainable solutions in each area, such as setting burning periods and promoting the cultivation of alternative crops.

Teaching

Outreach

ASOK MODEL

ASOK Model project aimed to advance the well-being of urban communities – The university is capable of contributing to sustainable development under the strategic plan to collaborate with society. Emphasis on the creation of a prototype to improve the urban communities' well-being in the Asok area, using an area-based approach.

ONGKHARAK MODEL

The ONGKHARAK Model aims to enhance the community of Ongkharak District in Nakhon Nayok Province – by setting up and building upon the knowledge in improving the integrated well-being of the community. It improves upon the integrated well-being network by definitive collaboration with local organizations, utilizing the community's cultural resources as a base.

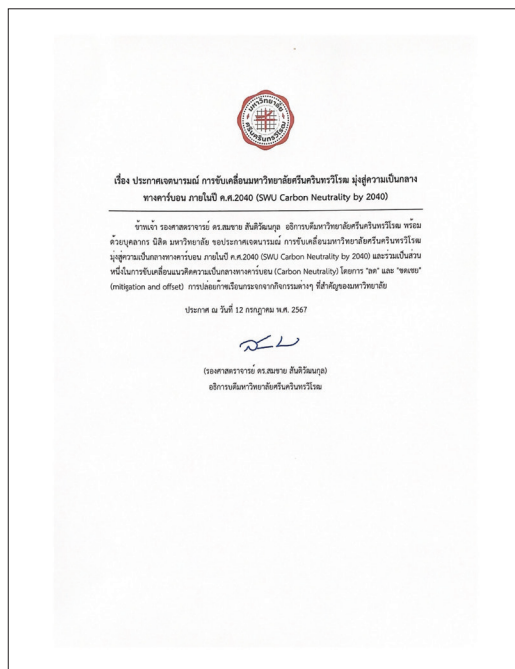
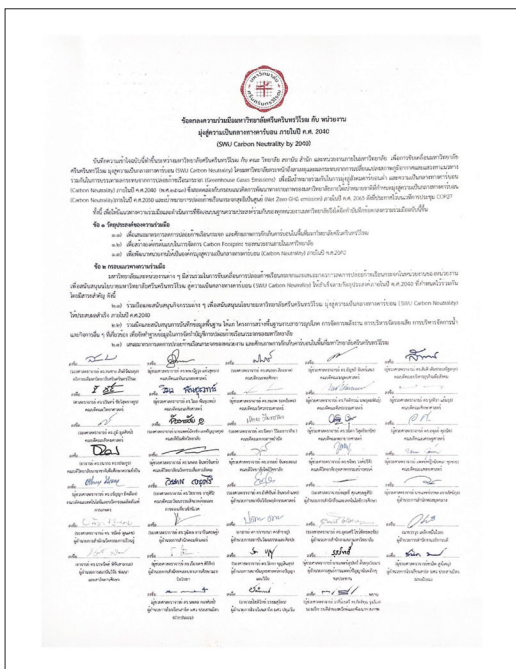
Stewardship





Memorandum of Understanding for Cooperation Between Srinakharinwirot University and Carbon Neutrality Agencies by 2040 (SWU Carbon Neutrality by 2040)

This MOU has been made between Srinakharinwirot University & faculties, colleges, Institutes, offices, and agencies within the university; SWU towards achieving Carbon Neutrality within Srinakharinwirot University. The university is conscious of the causes and effects of Climate Change & strives to find a path to mitigate the effects of greenhouse gas emissions, to move toward a low-emission society and Carbon Neutrality within 2040. Which aligned with the university's framework of physical development under the national goal of achieving Carbon Neutrality within 2050 and Net Zero GHG emission within 2065, as announced during the COP27 conference.



1 NO POVERTY



Research



4 Publications

Numerical

Scholarships Fund



Total **648** Student



13,948,247 THB

Scholarships	The Number of students	Scholarships Fund
Internal Fund	359 Students	4,316,891 THB
External Fund	289 Students	9,631,356 THB

Loan Fund



Total **11,226** Student



1,277,495,000 THB

► **Low or lower-middle income countries student support**

SWU organizes grants for supporting poor students from low or lower-middle-income countries such as Sri Lanka and Madagascar.

<https://sdg.swu.ac.th/projects/90789/preview>

► **Local start-up financial assistance**

SWU has a project to provide financial assistance to the local community assisting the start-up of financially and socially sustainable businesses.

Policy





2 ZERO HUNGER



Research



9 Publications

Numerical

Food waste



Total **1,008.90** KG.

Ref. <https://lookerstudio.google.com/u/0/reporting/cb33c087-a20d-4190-8719-608749c0b06d/page/nuG5D>

Number of graduates from agriculture and aquaculture courses including sustainability aspects



Total **317** Graduates



2022 In Academic year

► **Campus food waste tracking**

SWU has a Sustainable Development Office to measure the amount of food waste generated from food served within the university.

http://physdo.op.swu.ac.th/waste_psm

► **Student food insecurity and hunger**

SWU has grants to support 98 students for food insecurity/hunger. The total grant is 784,000 Thai Baht.

Policy

► **Sustainable food purchases**

SWU prioritizes purchase of products from local, sustainable sources following the government regulation.

SWU: <https://sdg.swu.ac.th/policies/14>

Outstanding Project



► **Plant Production Technology Transfer Project through The AI Smart Farm Learning Center**
Access to food security knowledge

SWU has a project to provide access to food security and sustainable agriculture knowledge/skills/technology to local farmers and food producers. In 2023, SWU has a project to develop innovative agricultural products and community food from raw materials in Nakhon Nayok Province.

<https://sdg.swu.ac.th/projects/90729/preview>

► **Design Thinking Workshop Project to Create New Ideas for Community Enterprises in Nakhon Nayok Province**
University access to local farmers and food producers

SWU has the Faculty of Agricultural Product Innovation and Technology to conduct research and improve sustainable farming practices to local farmers and food producers such as Design Thinking Workshop Project to Create New Ideas for Community Enterprises in Nakhon Nayok Province

<https://sdg.swu.ac.th/projects/90722/preview>

More outreach activities:

<https://sdg.swu.ac.th/sdg/2023/SDG%202>



3 GOOD HEALTH AND WELL-BEING



Research



108 Publications

Numerical

Number of graduates in health professions



Total – Graduates



2022 In Academic year

► **Shared sports facilities**

SWU has Sirindhorn Sports Center to share sports facilities with local communities and the general public in Ongkharak campus such as stadiums, tennis court, jogging tracks with free and charged access.

<https://sport.swu.ac.th/th/service>

► **Mental health support**

SWU has a Student Affairs Office to provide students and staff with access to mental health support through OCCA application. Our University has two hospitals and one medical clinic, providing health care services including mental health support. The healthcare services are partially paid for by health insurance provided by the University.

<https://studentaffairs.op.swu.ac.th/Counseling>

Policy

► **Smoke-free policy**

SWU has had a 'smoke-free' policy since 2015.

<https://sdg.swu.ac.th/policies/9>

<https://www.facebook.com/phasaiclinic101/>



Outstanding Project

► *The Tobacco Consumption Control Project: Thai Physicians Alliance Against Tobacco (Tpaat)*

Current collaborations with health institutions

SWU has the projects that have current collaborations with local and global health institutions to improve health & wellbeing outcomes such as the Tobacco Consumption Control Project.

<https://sdg.swu.ac.th/projects/90779/preview>



were controlled better by more than 40% and 60% respectively.

► Elderly people and people with mobility problems are being rehabilitated. and Take care of your health 100% correctly.

► Homebound and bedridden patients decrease disability and burden on caregivers and communities Increase quality of life for patients.

<https://sdg.swu.ac.th/projects/90843/preview>



► *Health outreach programmes*

SWU has the projects that deliver outreach programs and projects to improve or promote health & wellbeing in the local communities, disadvantaged people and immigrant communities.

<https://sdg.swu.ac.th/projects/90770/preview>

► *People's Health Network Project Nakhon Nayok Province That Is Sustainable*

Indicator 3.4.1 Mortality rate attributed to cardiovascular disease, cancer, diabetes or chronic respiratory disease

► Carers for the elderly and those with mobility problems, have knowledge and good health behavior in order to have good health 100%

► Diabetic and hypertension patients, symptoms

4 QUALITY EDUCATION



Research



24 Publications

Numerical

Number of graduates who gained a qualification that entitled them to teach at primary school level



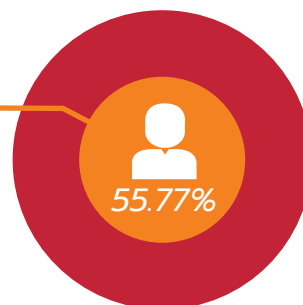
Total = Graduates



2022 In Academic year

Number of first-generation students starting from students starting a degree

Number of first-generation students starting a degree
4,722 Students



Number of students starting a degree
8,467 Students

► **Public resources (lifelong learning)**

Public resources (lifelong learning)
<https://thaimooc.org/taxonomy/publisher/swu>
<https://lib.swu.ac.th/>



SWU has the projects that are open to the general public: public lectures, community educational events.
<https://sdg.swu.ac.th/sdg/2023/SDG%204>

Policy



► *Lifelong learning access policy*

SWU has a policy that ensures that access to these activities is accessible to all, regardless of ethnicity, religion, disability, immigration status or gender such as the Special Education And Care Pedagogical Training Program In Academic Year 2021 project. SWU also has a policy to provide re-skill/up-skill courses for all ages.

<https://sdg.swu.ac.th/policies/33>

Outstanding Project



5 GENDER EQUALITY



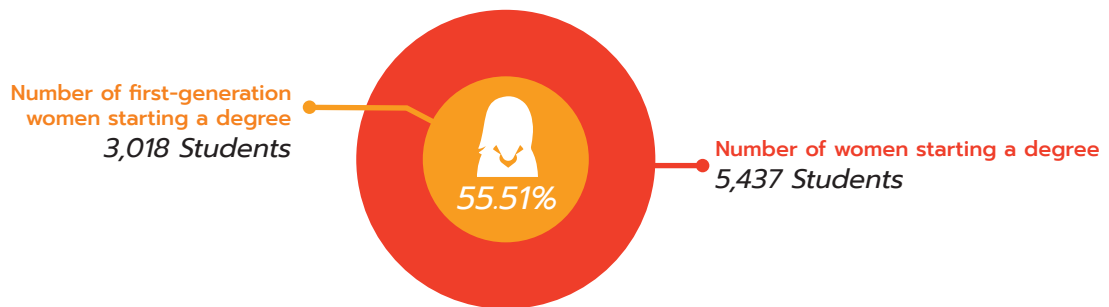
Research



4 Publications

Numerical

Number of first-generation women starting from women starting a degree



► **Tracking access measures**

SWU has the Educational Support and Service Office to measure women's application rate and study completion rate. In 2022, SWU developed a dashboard for monitoring students.

<http://edservices.op.swu.ac.th/data>

<https://dashboard.swu.ac.th/PublicDetail/6202>

► **Track women's graduation rate**

SWU has the Educational Support and Service Office to measure graduating compared to men's.

<https://dashboard.swu.ac.th/PublicDetail/6202>

Policy

► **Policy for women applications and entry**

SWU has a policy addressing women's applications and participation at the university but we are open for all applications.

<https://sdg.swu.ac.th/policies/10>



▶ ***Policy of non-discrimination against women***

SWU supports gender equality. Our policy does not discriminate against women and transgender people. We have both male and female in senior positions. The percentage of male and female academic staff and staff is Equal.

<https://sdg.swu.ac.th/policies/24>

▶ ***Non-discrimination policies for transgender***

SWU supports gender equality. Our policy does not discriminate against women and transgender people. We have both male and female in senior positions. The percentage of male and female academic staff and staff is Equal.

<https://sdg.swu.ac.th/policies/10>

▶ ***Maternity and paternity policies***

SWU has a policy allowing women staff to take a maternity leave for 3 months with paid and another 3 months without paid. Moreover, the men's staff can also take care of his wife for 3 months with pay.

<https://sdg.swu.ac.th/policies/12>

▶ ***Policies protecting those reporting discrimination***

SWU has the Regulations on Human Resource Management for protecting and reporting discrimination from educational or employment disadvantage.

<https://sdg.swu.ac.th/policies/31>

Outstanding Project



6 CLEAN WATER AND SANITATION



Research



10 Publications

Numerical

Volume of water used in the university: Inbound (treated/extracted water)



Total - Liter

► **Wastewater treatment**

SWU has The Sustainable Development Office to treat wastewater on campus.

<https://green.swu.ac.th/water>

<https://green.swu.ac.th/waste>

► **Off-campus water conservation support**

Srinakharinwirot University supports water conservation off campus such as the Underground Water project and Impacts of Land Use Management on Riparian Ecosystem Along the Rivers, Phra Prong Watershed, Eastern Thailand.

<https://sdg.swu.ac.th/projects/90781/preview>

Policy

► **Water reuse policy**

SWU has a policy to maximize water reuse across the university. Water supply at SWU (Ongkharak Campus) is abundant. There are a number of large lakes and interconnecting waterways throughout the campus. The several large lakes and interconnecting waterways throughout the campus serve as both repositories for conserving water runoff and also as a source from which the vast swathes of vegetation across campus can be watered.

<https://green.swu.ac.th/water>

Outstanding Project





7 AFFORDABLE AND CLEAN ENERGY



Research



28 Publications

Numerical

Total energy used



Total - kWh

► **Policy development for clean energy technology**

SWU has an EV charging station at Ongkharak Campus and E-Motorbike Sharing Platform to support the government in clean energy and energy-efficient technology policy development.

<https://green.swu.ac.th/transportation>

<http://dorm.op.swu.ac.th/>

Policy

► **Divestment policy**

SWU has the Sustainable Development Office to organize policy on divesting investments from carbon-intensive energy industries.

<https://sdg.swu.ac.th/policies/18>

► **Policy development for clean energy technology**

SWU has an EV charging station at Ongkharak Campus and E-Motorbike Sharing Platform to support the government in clean energy and energy-efficient technology policy development.

<https://green.swu.ac.th/transportation>

<http://dorm.op.swu.ac.th/>

Outstanding Project





8 DECENT WORK AND ECONOMIC GROWTH



Research



19 Publications

Numerical

Number of employees



Total **1500** Employees

Employees on secure contracts



Total - Employees

► **Employment practice unions**

SWU has the faculty and staff council of Srinakharinwirot University to recognise unions & labor rights (freedom of association & collective bargaining) for all.

<https://sport.swu.ac.th/th/service>

► **Employment practice appeal process**

SWU has a process for employees to appeal on employee rights and/or pay.

<http://legal.op.swu.ac.th/appeal>

<http://legal.op.swu.ac.th/Portals/32/Appealing%20Process%20according%20to%20Regulations%20of%20SWU.pdf?ver=VM7kvb1bzbu9wBY0tosDqA%3d%3d>

Policy

► **Employment policy on discrimination**

SWU has a policy to support non discrimination in the workplace. University ethics regulations are announced as the rule of working ethics and good employment practices.

<https://sdg.swu.ac.th/policies/25>

► **Employment policy modern slavery**

SWU has a policy commitment against forced labour, modern slavery, human trafficking, and child labour.

<https://sdg.swu.ac.th/policies/26>

► **Employment practice equivalent rights outsourcing**

SWU has a policy on guaranteeing equivalent rights of workers when outsourcing activities to third parties.

<https://sdg.swu.ac.th/policies/27>



▶ ***Employment policy pay scale equity***

SWU has a policy on pay scale equity including a commitment to measurement and elimination of gender pay gaps.

<https://sdg.swu.ac.th/policies/30>

Outstanding Project

▶ ***Aomsin Bank Project 2022***

<https://sdg.swu.ac.th/projects/90757/preview>

▶ ***U2T For Bcg Project : Maharat District, Phra Nakhon Si Ayutthaya***

<https://sdg.swu.ac.th/projects/90761/preview>

▶ ***Sustaining Thailand's Seafood Processing Sector: Workforce Development***

<https://sdg.swu.ac.th/projects/90764/preview>



9 INDUSTRY, INNOVATION AND INFRASTRUCTURE



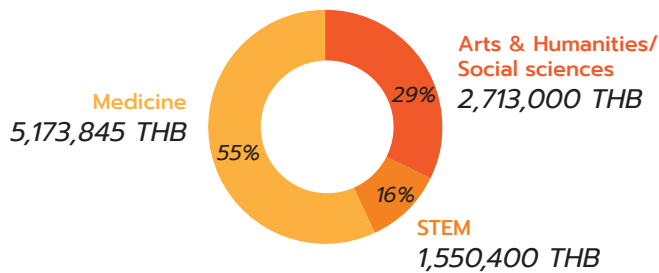
Research



14 Publications

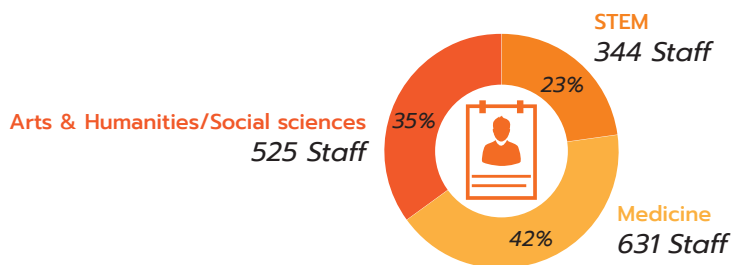
Numerical

Research income from industry and commerce



Total Research income
9,437,245 THB

Number of academic staff by subject area



Total academic staff
1,500 Staff

► Shared sports facilities

SWU has Sirindhorn Sports Center to share sports facilities with local communities and the general public in Ongkharak campus such as stadiums, tennis court, jogging tracks with free and charged access.

<https://sport.swu.ac.th/th/service>



Outstanding Project

- ▶ *Sustaining Thailand's Seafood Processing Sector: Workforce Development*
<https://sdg.swu.ac.th/projects/90764/preview>



10 REDUCED INEQUALITIES



Research



6 Publications

Numerical

Number of students with disability



Total **22** Student

Number of employees with disability



Total **37** Staff

▶ Access to university track underrepresented groups applications

SWU has an Educational Support and Service Office to measure/track applications & admissions of disabled students.

<http://studentaffairs.op.swu.ac.th/dsscenter>

▶ Access to university underrepresented groups recruit

SWU has the Educational Support and Service Office to recruit students from under-represented groups and has a Disability Support Service Center to support the students with disabilities. SWU has a special project to recruit students from under-represented groups. The students can enroll through the SWU admission system.

<http://studentaffairs.op.swu.ac.th/dsscenter>

<https://admission.swu.ac.th/admissions2/>

▶ Support for underrepresented groups

SWU has Disability Support Services to support students from underrepresented groups.

<http://studentaffairs.op.swu.ac.th/dsscenter>

▶ Disability support services

SWU has Disability Support Services to support services for people with disabilities.

<http://studentaffairs.op.swu.ac.th/dsscenter>



▶ **Disability access scheme**

SWU has Disability Support Services to provide access schemes for people with disabilities.
<http://studentaffairs.op.swu.ac.th/dsscenter>

Policy

▶ **Non-discriminatory admissions policy**

SWU has the Human Resources Office and Discipline to make anti-discrimination and anti-harassment policies.

<https://sdg.swu.ac.th/policies/28>

▶ **Anti-discrimination policies**

SWU has an admissions policy which is non-discriminatory or which details and explains the logic for any appropriate positive discrimination policies in admissions, which is publicly posted.

<https://sdg.swu.ac.th/policies/29>

▶ **Disability accommodation policy**

SWU has an Educational Support and Service Office to provide funding / scholarship for student disability.

<https://sdg.swu.ac.th/policies/35>

<http://studentaffairs.op.swu.ac.th/Educationalmanagementfordisabledstudents>

Outstanding Project

11 SUSTAINABLE CITIES AND COMMUNITIES



Research



9 Publications

Numerical

University expenditure



Total **9,727** Million THB

University expenditure on arts and heritage



Total **11,218,400** THB

► Public access to buildings

SWU has The Institute of Culture and Arts to provide public access to buildings and monuments of cultural significance such as the Museum of Education.

<https://sport.swu.ac.th/th/service>

► Public access to libraries

SWU has The Central Library of Srinakharinwirot University to provide public access to libraries including books and publications.

<https://lib.swu.ac.th/>

► Public access to museums

Institute of Culture and Arts, there is an area for art and cultural learning services including the history of the university in 2 areas which are 1) Education Museum and SWU Archives and 2) G23 Art Gallery, which provides services to faculty, students and the public without charging. In addition, the Institute of Culture and Arts, Srinakharinwirot University also organizes staff to provide guided tours, relay historical information and show artwork.

<https://ica.swu.ac.th/service/act>

► Sustainable practices targets



SWU has the Sustainable Development Office to measure and set targets for more sustainable commuting shuttle bus, public transportation and vehicles.

<https://green.swu.ac.th/transportation>

► **Promote sustainable commuting**

SWU has the Sustainable Development Office to promote the % of more sustainable commuting shuttle bus, public transportation.

<https://green.swu.ac.th/transportation>

► **Allow remote working**

SWU has The Computer Center to promote and allow telecommuting or remote working for employees. SWU provide software (eg. meet, zoom) for online learning, meeting and conference.

<http://en.cc.swu.ac.th/Default.aspx?tabid=19234>

<https://covid19.swu.ac.th/>

Policy

Outstanding Project

► *Driving The Creative Economy For Area-Based Development In 4 Sub-Districts Of Sena District, Phra Nakhon Si Ayutthaya Province*



12 RESPONSIBLE CONSUMPTION AND PRODUCTION



Research



18 Publications

Numerical

► **Waste tracking**

SWU has the Sustainable Development Office to measure the amount of waste generated and recycled across the university.

http://physdo.op.swu.ac.th/waste_psm

► **Publication of a sustainability report**

SWU has the Sustainable Development Office to make Publication of sustainability reports.

<https://green.swu.ac.th/resources>

Policy

► **Ethical sourcing policy**

SWU has the Property Management Division to make the policy on ethical sourcing of food and supplies.

<https://sdg.swu.ac.th/policies/13>

► **Policy waste disposal - hazardous materials**

SWU has the Sustainable Development Office to make a policy on waste disposal.

<https://sdg.swu.ac.th/policies/19>

► **Policy waste disposal - hazardous materials**

SWU has the Sustainable Development Office to make a policy on waste disposal.

<https://sdg.swu.ac.th/policies/19>

http://physdo.op.swu.ac.th/waste_psm



▶ ***Policy waste disposal - landfill policy***

SWU has the Sustainable Development Office to make a policy on waste disposal.
<https://sdg.swu.ac.th/policies/20>

▶ ***Policy for minimisation of plastic use***

SWU has the Sustainable Development Office to make a policy around use minimisation - Of plastic.
<https://sdg.swu.ac.th/policies/16>

▶ ***Policy for minimisation of disposable items***

SWU has the Sustainable Development Office to make a policy around use minimisation - Of disposable items.

<https://sdg.swu.ac.th/policies/21>

▶ ***Disposable policy: extensions to services***

SWU has a policy extending to outsourced suppliers and the supply chain - Services for food waste management.

<https://sdg.swu.ac.th/policies/14>

▶ ***Minimisation policies extended to suppliers***

SWU has a policy extending to outsourced suppliers and the supply chain - Supplier outsourced services for suppliers of equipment.

<https://sdg.swu.ac.th/policies/32>

Outstanding Project



13 CLIMATE ACTION



Research



10 Publications

Numerical

Total energy used



Total - kWh

► **Local education programmes on climate (13.3.1)**

SWU has a Faculty of Environmental Culture and Ecotourism to provide local education programmes or campaigns on climate change risks, impacts, mitigation, adaptation, impact reduction and early warning.

<https://sdg.swu.ac.th/projects/80709/preview>

Policy

► **Commitment to carbon neutral university**

SWU has the target to be carbon neutral in 2040. (scope 1)

<https://sdg.swu.ac.th/policies/38>

Outstanding Project

► **An Application of Geographic Information System for Participatory Analysis of Wildfire Risk Area in Chiang Rai Province**

<https://sdg.swu.ac.th/projects/90840/preview>







Research



5 Publications

Numerical

► *Shared sports facilities*

SWU has Sirindhorn Sports Center to share sports facilities with local communities and the general public in Ongkharak campus such as stadiums, tennis court, jogging tracks with free and charged access.
<https://sport.swu.ac.th/th/service>

Policy

► *Reducing marine pollution (policy) (14.4.3)*

SWU has the Sustainable Development Office to prevent and reduce marine pollution from plastic waste.
<https://sport.swu.ac.th/th/service>

Outstanding Project







Research



4 Publications

Numerical

► ***Educational programmes on ecosystems (15.2.4)***

SWU has the projects to educate on ecosystems for local communities.

<https://sdg.swu.ac.th/projects/90762/preview>

► ***Sustainable management of land for agriculture and tourism (educational outreach) (15.2.5)***

SWU has a project on sustainable management of land for agriculture and tourism.

<https://sdg.swu.ac.th/projects/80710/preview>

Policy

► ***Sustainable use, conservation and restoration of land (policy)***

SWU has the Sustainable Development Office to make a policy to ensure the conservation, restoration and sustainable use of terrestrial ecosystems associated with the university.

<https://green.swu.ac.th/infrastructure>

► ***Policy on plastic waste reduction***

SWU has a policy on reducing plastic waste on campus.

<https://sdg.swu.ac.th/policies/17>

► ***Policy on hazardous waste disposal***

SWU has a policy on waste disposal - covering hazardous materials.

<https://sdg.swu.ac.th/policies/23>

http://physdo.op.swu.ac.th/waste_psm



Outstanding Project

- ▶ *Botanical Garden of The Faculty of Pharmacy, Srinakharinwirot University*
<https://sdg.swu.ac.th/projects/90813/preview>

16 PEACE, JUSTICE AND STRONG INSTITUTIONS



Research



5 Publications

Numerical

► ***Elected representation (16.2.1)***

SWU has elected representation on the university's highest governing body from. We have a student senate and faculty council.

<http://studentaffairs.op.swu.ac.th/studentorganization>
<http://senate.swu.ac.th/Default.aspx?tabid=19294>

► ***Students' union (16.2.2)***

SWU has a student senate and student council.

<http://studentaffairs.op.swu.ac.th/studentorganization>
<https://th-th.facebook.com/spanisitswu>

► ***University principles on corruption and bribery (16.2.5)***

SWU has the Office of Legal Affairs and Discipline to publish the university's principles and commitments on organized crime, corruption & bribery to all departments.

<http://council.swu.ac.th/Default.aspx?tabid=20455>
<http://legal.op.swu.ac.th/>

► ***Publish financial data***

SWU has a publication of university financial data as open data.

<https://www.swu.ac.th/SWUAnnualReport/2023/thai/>

Policy

► ***Identify and engage with local stakeholders (16.2.3)***



SWU has written policies and procedures to identify local stakeholders external to the university and engage with them such as Ethical sourcing policy.

<https://sdg.swu.ac.th/policies/13>

▶ **Academic freedom policy (16.2.6)**

SWU supports academic freedom (the freedom to choose areas of research and to speak and teach publicly about the area of their research).

<https://academic.swu.ac.th/>

▶ **Provide expert advice to government (16.3.1)**

SWU is a membership of the Council of University Presidents of Thailand to student admission.

<https://www.mycas.com/>

<http://www.cupt.net/%E0%B8%84%E0%B8%93%E0%B8%B0%E0%B8%81%E0%B8%A3%E0%B8%A3%E0%B8%A1%E0%B8%81%E0%B8%B2%E0%B8%A3%E0%B9%81%E0%B8%A5%E0%B8%B0%E0%B8%9A%E0%B8%B8%E0%B8%84%E0%B8%A5%E0%B8%B2%E0%B8%81%E0%B8%A3/?#1559716890577-065c19cb-4a06>

▶ **Policy- and lawmakers outreach and education**

SWU is a member of Sustainable University Network of Thailand to fight climate change.

<https://sunthailand.net/network>

▶ **Participation in government research**

SWU has the Strategic Wisdom and Research Institute to undertake policy-focused research in collaboration with government departments.

<https://research.swu.ac.th/ประจักษ์พินธ์/ข่าว/ขอเชิญผู้แทนหน่วยงานของท่านเข้าร่วม-Research-and-Policy-Dialogue-ครั้งที่-4-ประเทศไทยในโลกเดือด-Global-Boiling>

Outstanding Project



17 PARTNERSHIPS FOR THE GOALS



Research



24 Publications

► **Education for SDGs specific courses on sustainability**

SWU has the International College for Sustainability Studies that has many courses addressing sustainability and the SDGs such as Bachelor of Arts in Sustainable Hospitality and Tourism Management, Bachelor of Science in Environmental Technology and Resources, and Bachelor of Arts in Integrated Tourism Management.

<https://ic.swu.ac.th/academic/ba-in-sustainable-tourism/>

<http://ece.swu.ac.th/otherpages/ประชาสัมพันธ์หลักสูตรปริญญาตรีและบัณฑิตศึกษา.aspx>

Policy

► **Relationships with regional NGOs and government for SDG policy**

SWU has direct involvement in, or input into, national government SDG policy development - including identifying problems and challenges, developing policies and strategies, modeling likely futures with and without interventions, monitoring and reporting on interventions, and enabling adaptive management such as the Tobacco Consumption Control Project.

<https://sdg.swu.ac.th/projects/90779/preview>

Outstanding Project



